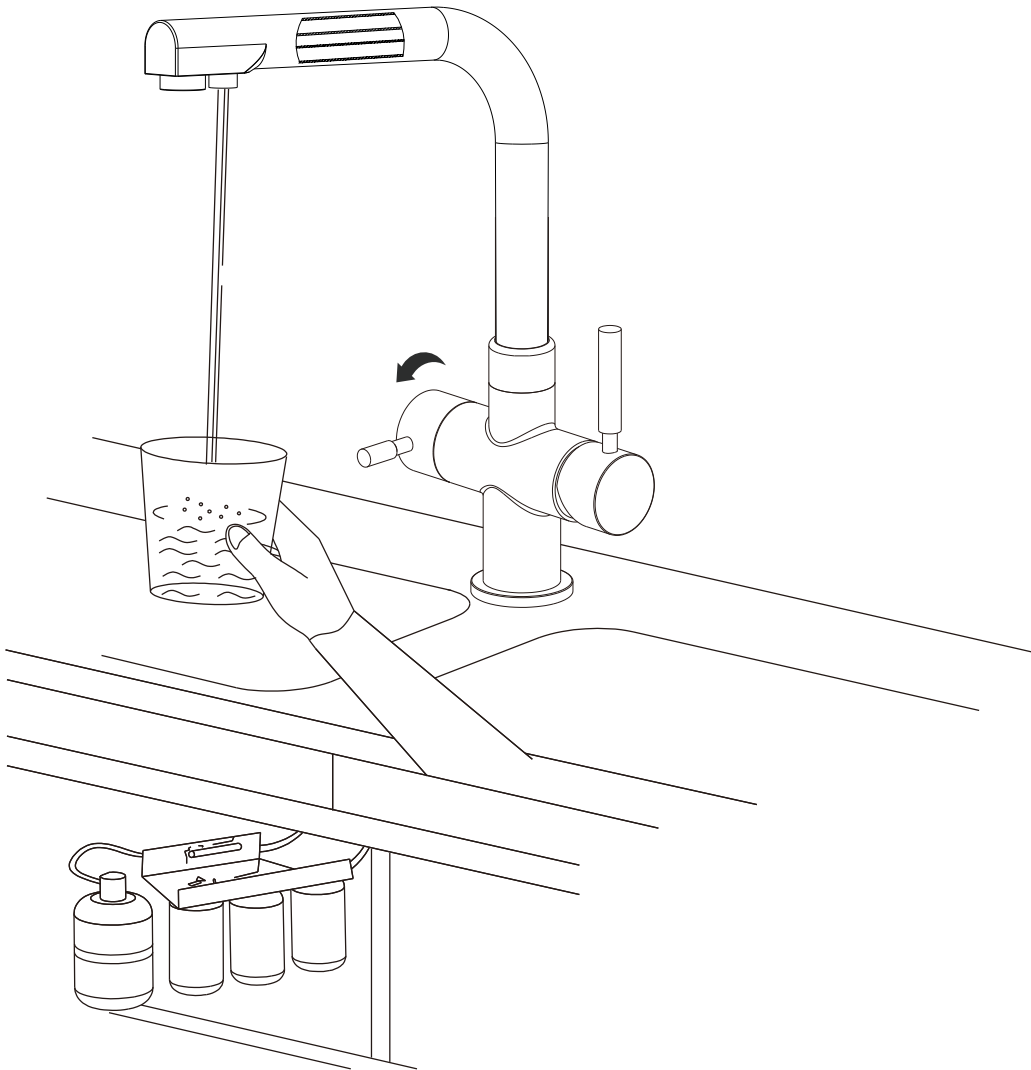


Three Way Kitchen Faucet

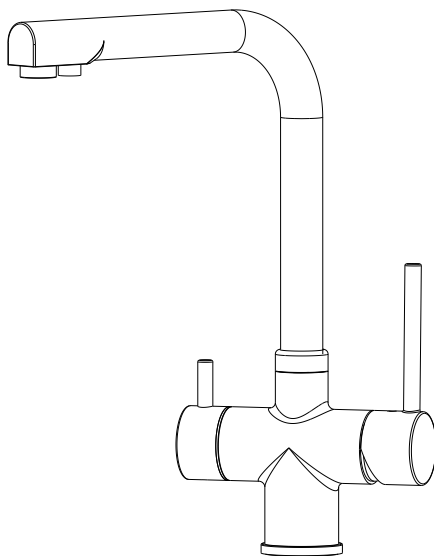


Installation Instruction

Three Way Kitchen Faucet

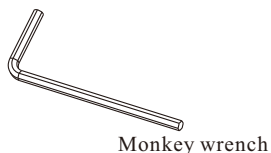
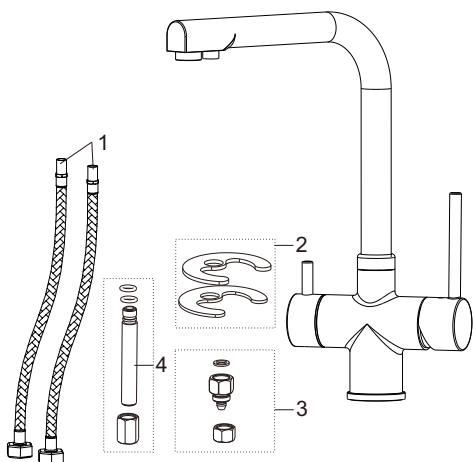
Specification

- 1.Chrome surface
- 2.Ceramic valve cartridge
- 3.Flow rated:2.2G/M base on 0.5Mpa
- 4.1/4" Connector for filtered water pipe
5. G-3/8 or G-1/2 Hose pipe connector as required



Installing tools

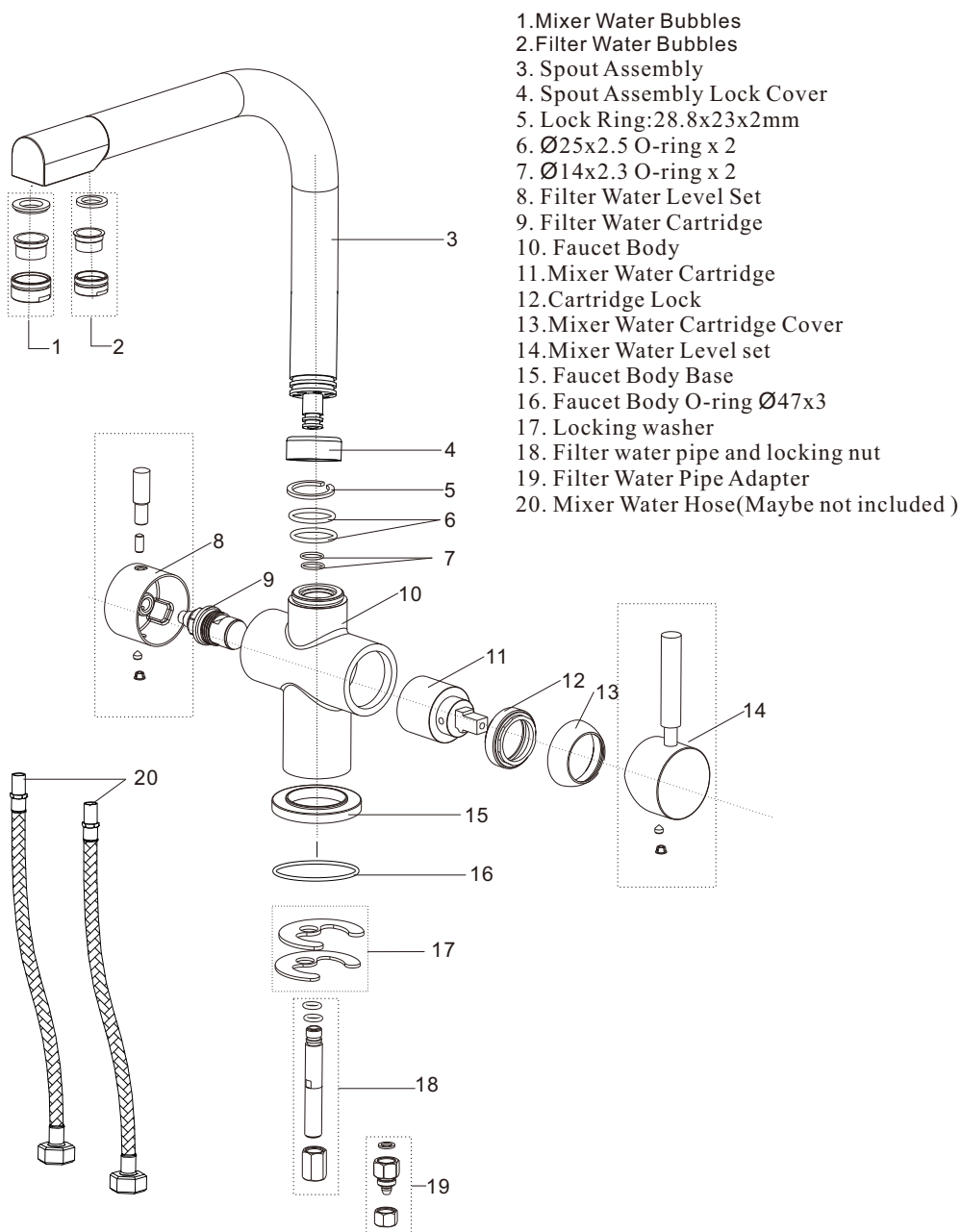
- *Allen wrench (2.5mm)
- *Pipe tape
- *Monkey wrench



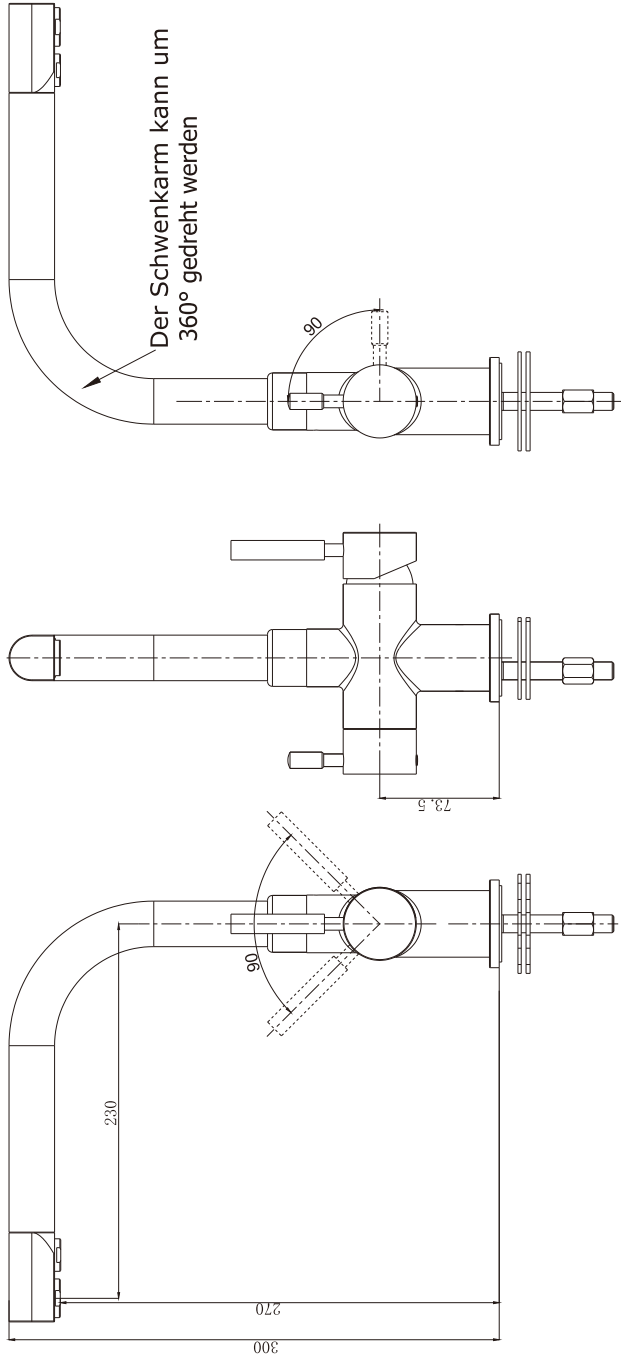
Accessories:

1. 2Pcs hot and cold stainless steel hoses ,
2. 1set washer
3. 1set filtered water pipe adapter
4. Locking and filtered water pipe set

Replacement Parts

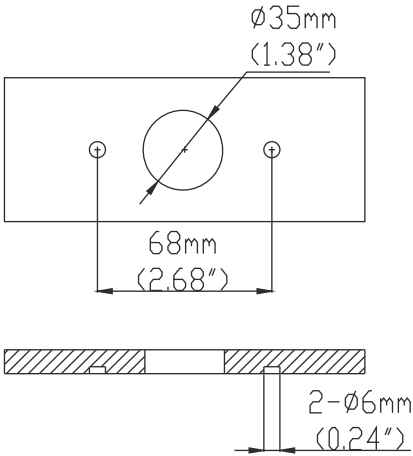


Profile Drawing



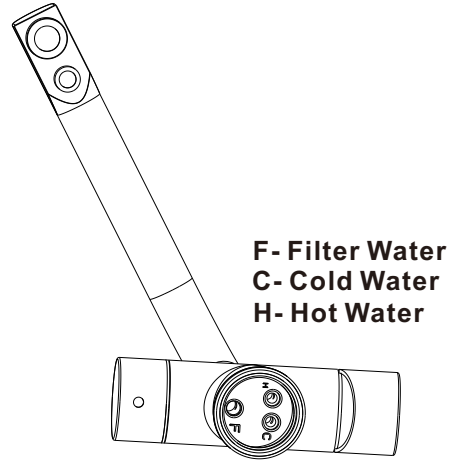
Item No.	Quantity	Item Name, description, material, dimension etc.	Article No. Reference
Designed by	Checked by	Approved by	Scale
Drawn by	Reviewed by	Released by	Unit
3 way faucet			mm
D0050 SANITARY WARE LTD.			mm

Faucet Installation Procedures



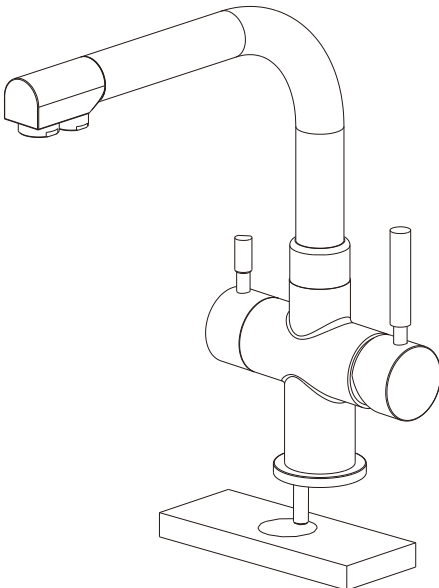
Step ①

Please be notice Filter water/cold/hot water position "mark"



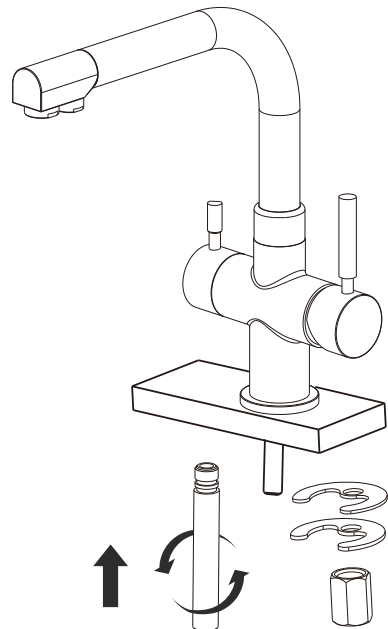
Step ②

Fixed Lock bolt before installing on countertop



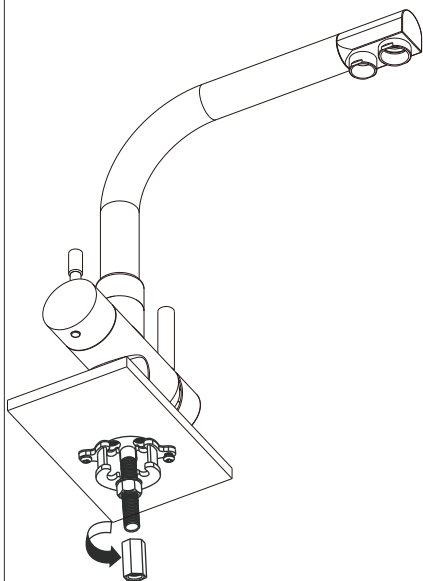
Step ③

Then connected filter water pipe



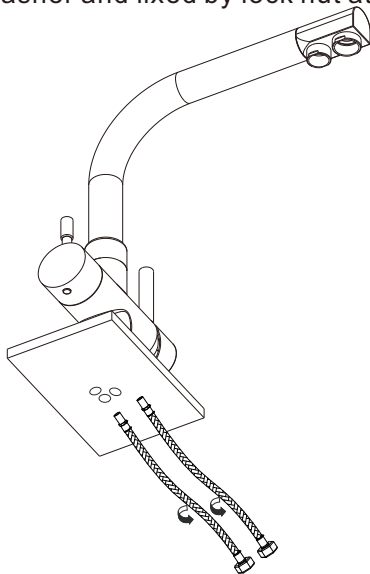
Step ④

Installing faucet on counter top



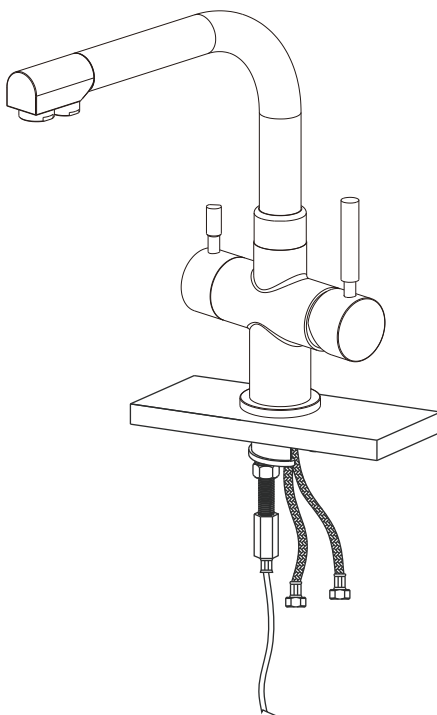
Step ⑤

Then installing rubber washer, metal washer and fixed by lock nut at last



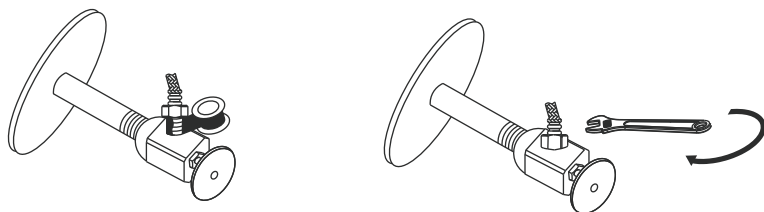
Step ⑥

Then fixed hot & cold water hose by correct "mark" hole



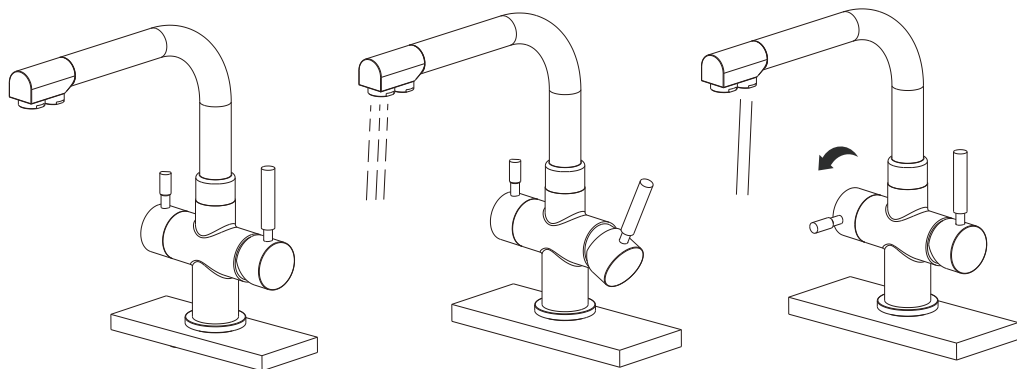
Step ⑦

Connected cold&hot water hose to supply water



Step ⑧

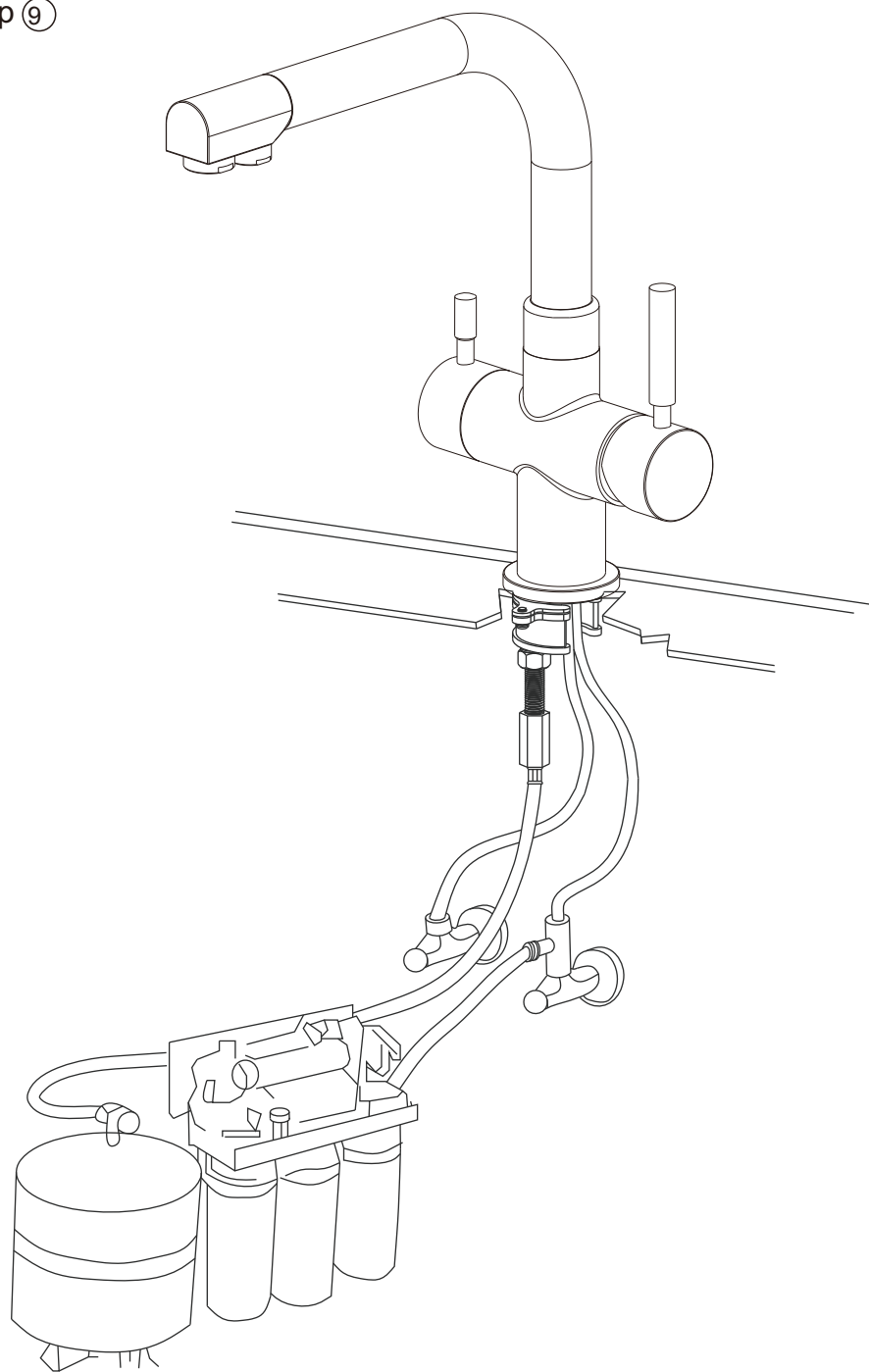
Testing faucet whether it working in good condition



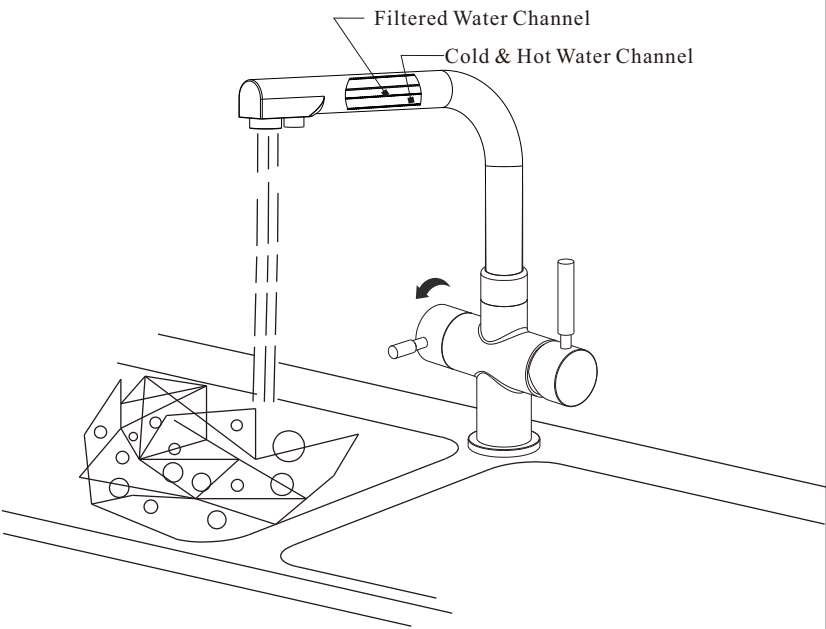
Notice

Please removal all the sand, silt etc. anything maybe block the cartridge before fixed to your kitchen Counter top. If the faucet cannot work, please send to a qualified person to repair it

Step ⑨



Step ⑩



Step ⑪

