

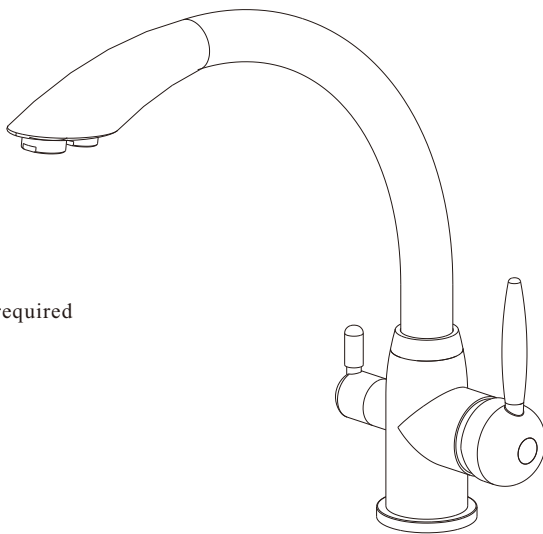
Three Way Kitchen Faucet

3 Wege Wasserhahn Grande



Installation Instruction

Three Way Kitchen Faucet

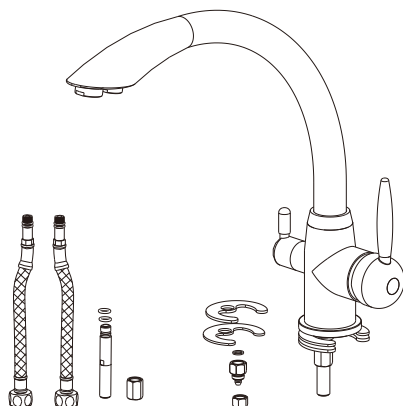
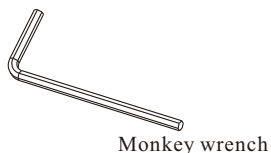


Specification

- 1.Chrome surface
- 2.Ceramic valve cartridge
- 3.Flow rated:2.2G/M base on 0.5Mpa
- 4.1/4" Connector for filtered water pipe
5. G-3/8 or G-1/2 Hose pipe connector as required

Installing tools

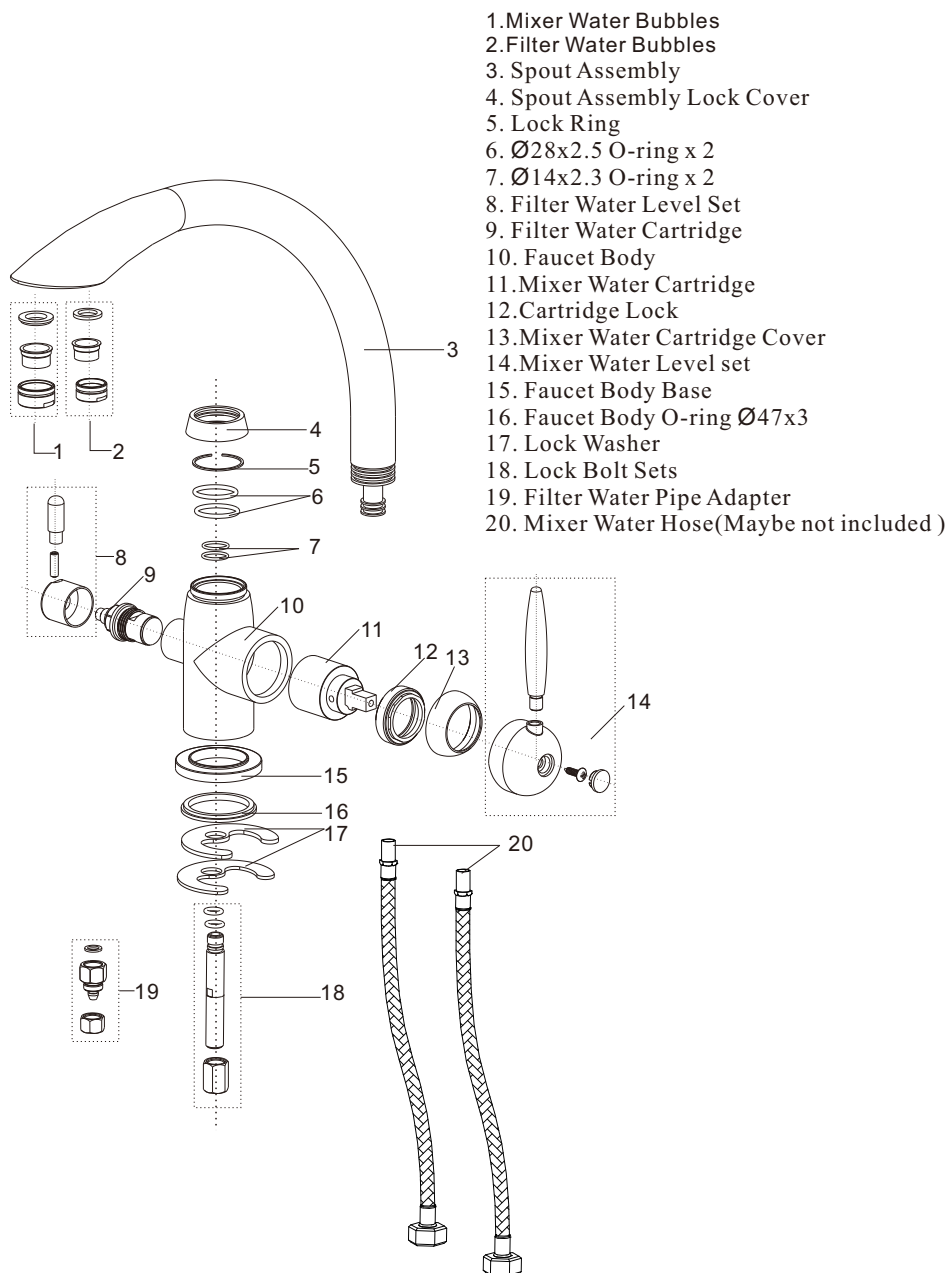
- *Allen wrench (2.5mm)
- *Pipe tape
- *Monkey wrench



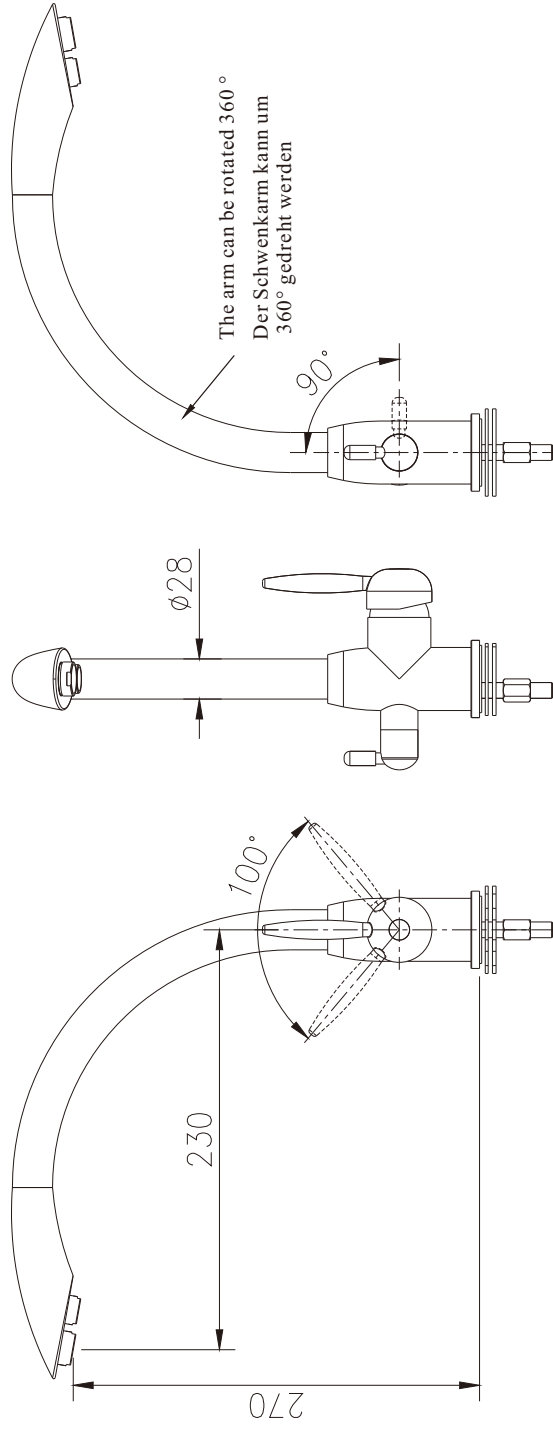
Accessories:

1. 2Pcs hot and cold stainless steel hoses ,
2. 1sets water filter adapter ;
3. 1pcs rubber gasket ,
4. 1Pcs stainless steel gasket

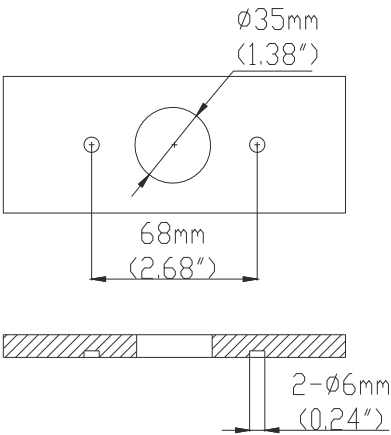
Replacement Parts



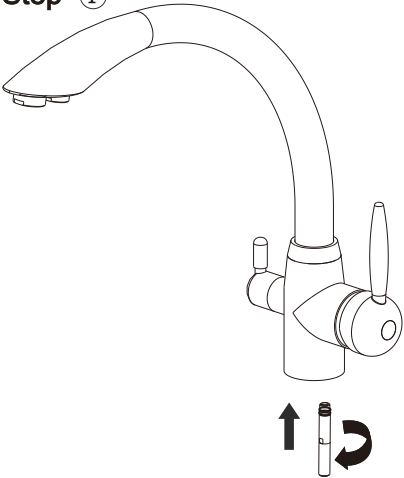
Profile Drawing



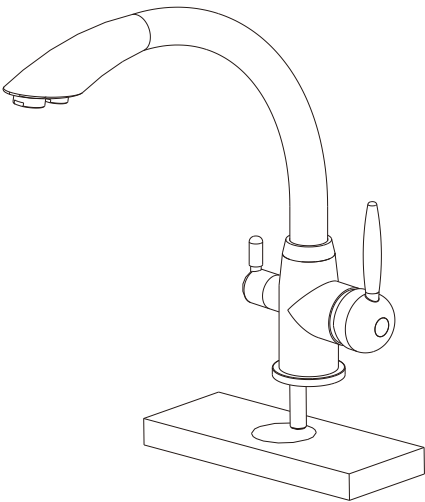
Faucet Installation Procedures



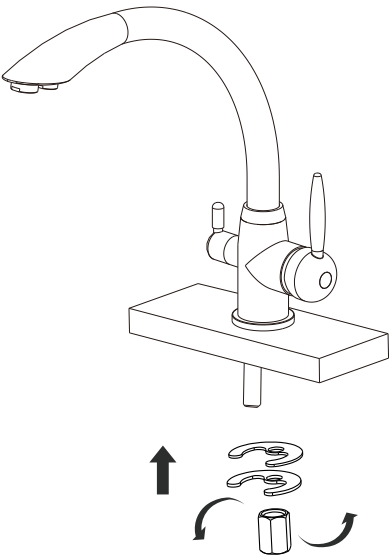
Step ①



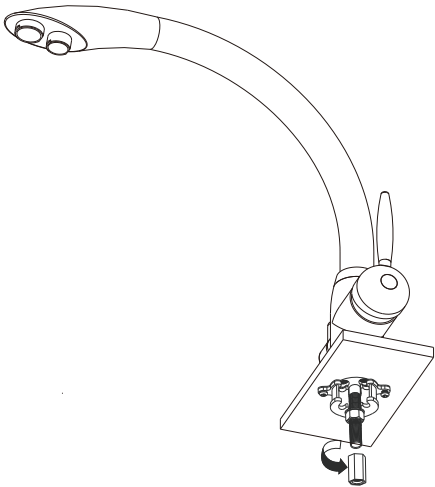
Step ②



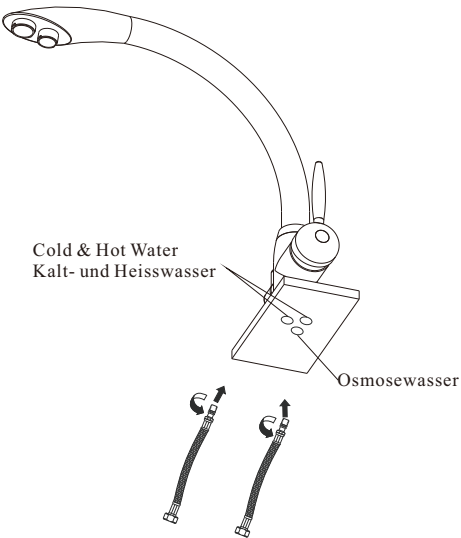
Step ③



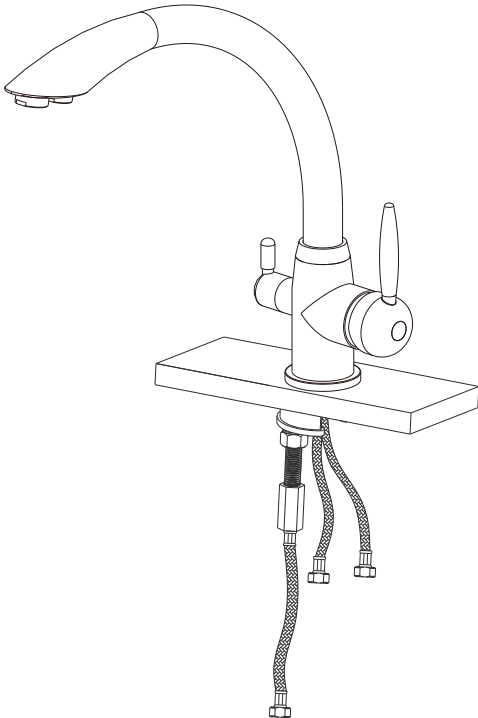
Step ④



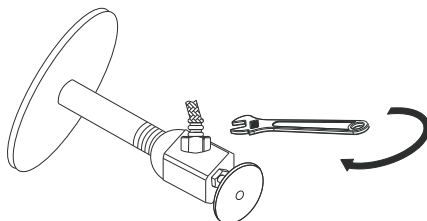
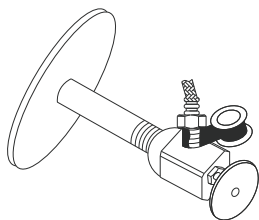
Step ⑤



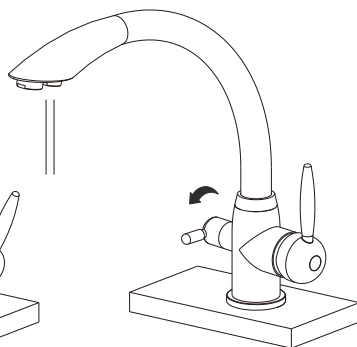
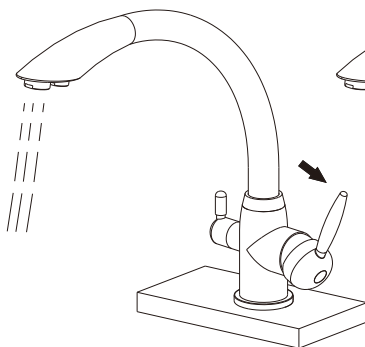
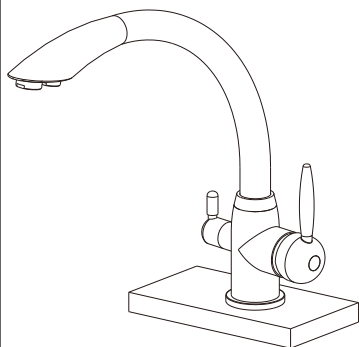
Step ⑥



Step ⑦



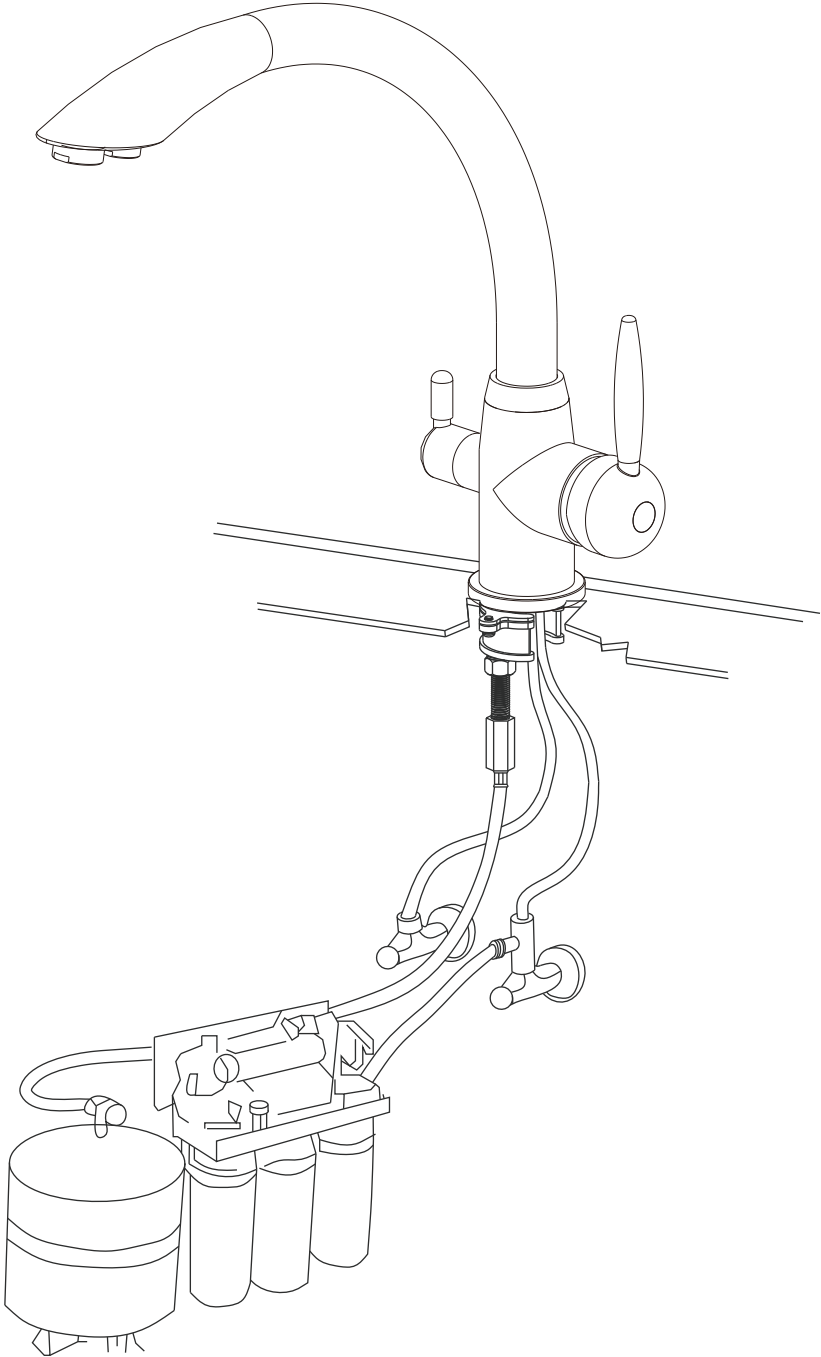
Step ⑧



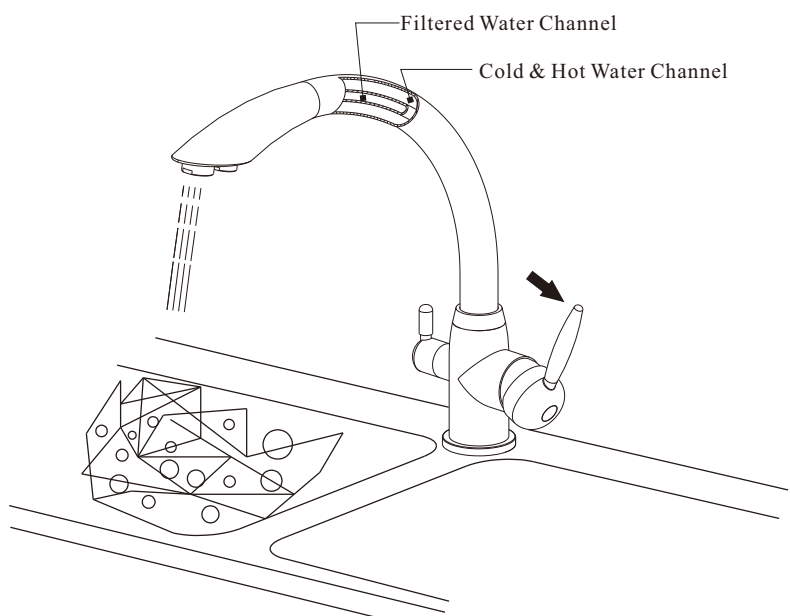
Notice

Please removal all the sand, silt etc. anything maybe block the cartridge before fixed to your kitchen Counter top. If the faucet cannot work, please send to a qualified person to repair it

Step ⑨



Step ⑩



Step ⑪

