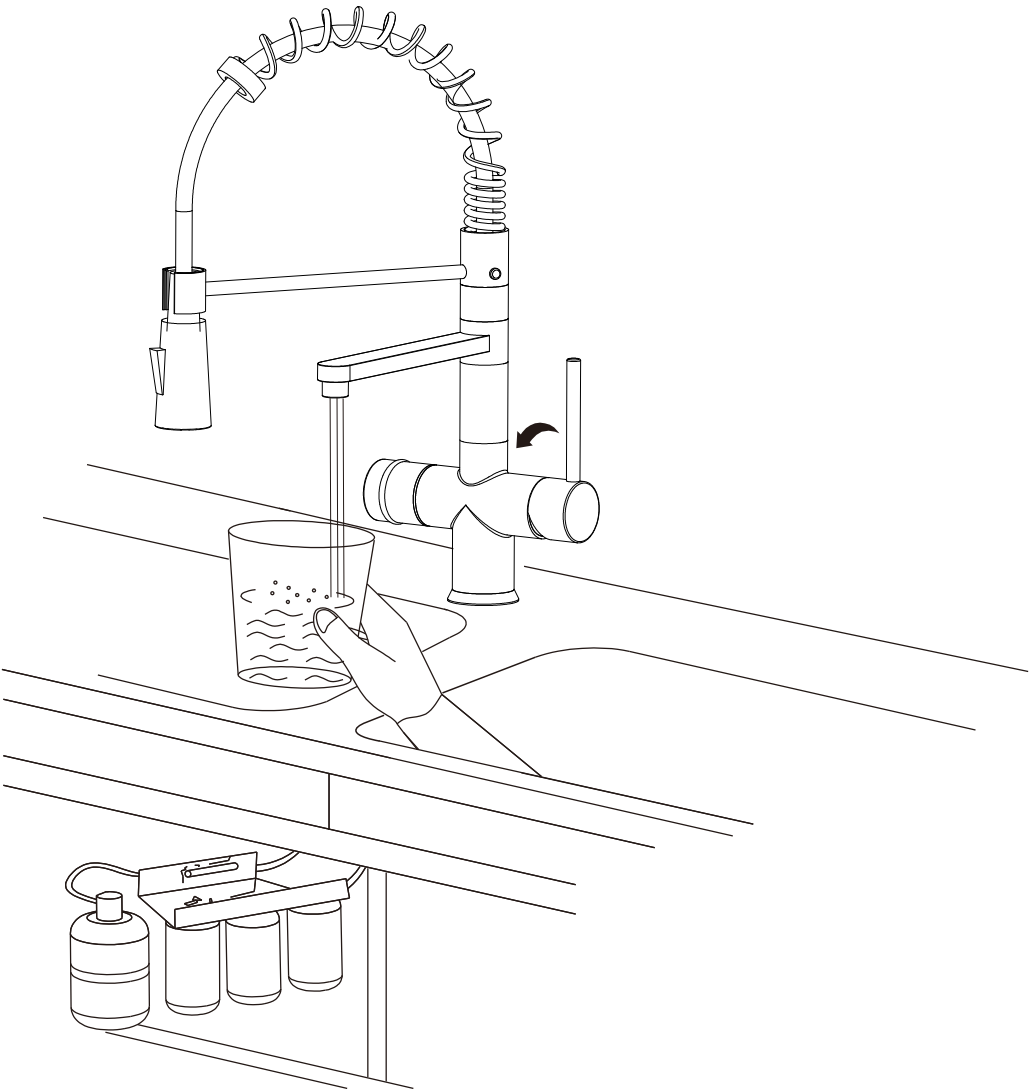


Spring Type 3 Way Faucet

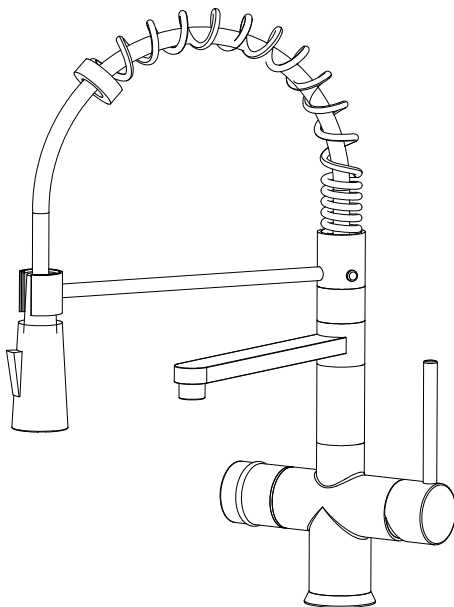


Installation Instruction

Spring Type 3 Way Faucet

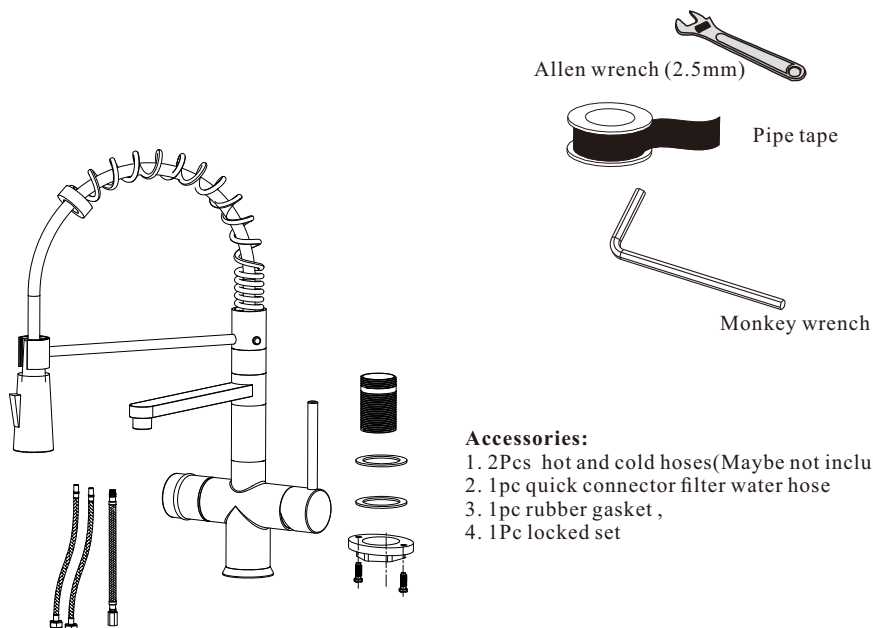
Specification

- 1.Surface treatment: Chrome
- 2.Ceramic valve cartridge
- 3.Flow rated:2.2G/M base on 0.5Mpa
- 4.1/4" Connector for filtered water pipe
5. G-3/8 or G-1/2 Hose pipe connector as required



Installing tools

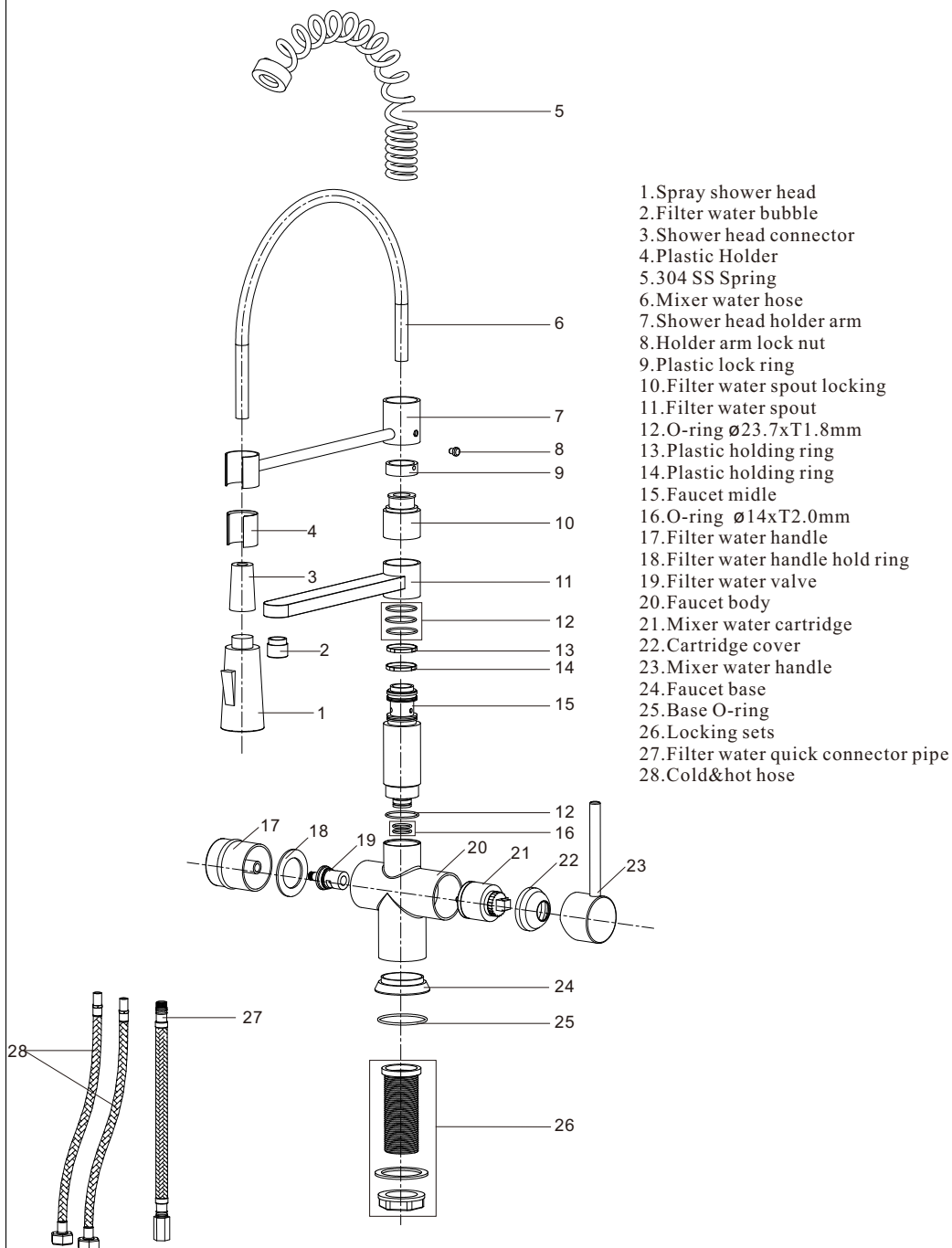
- *Allen wrench (2.5mm)
- *Pipe tape
- *Monkey wrench



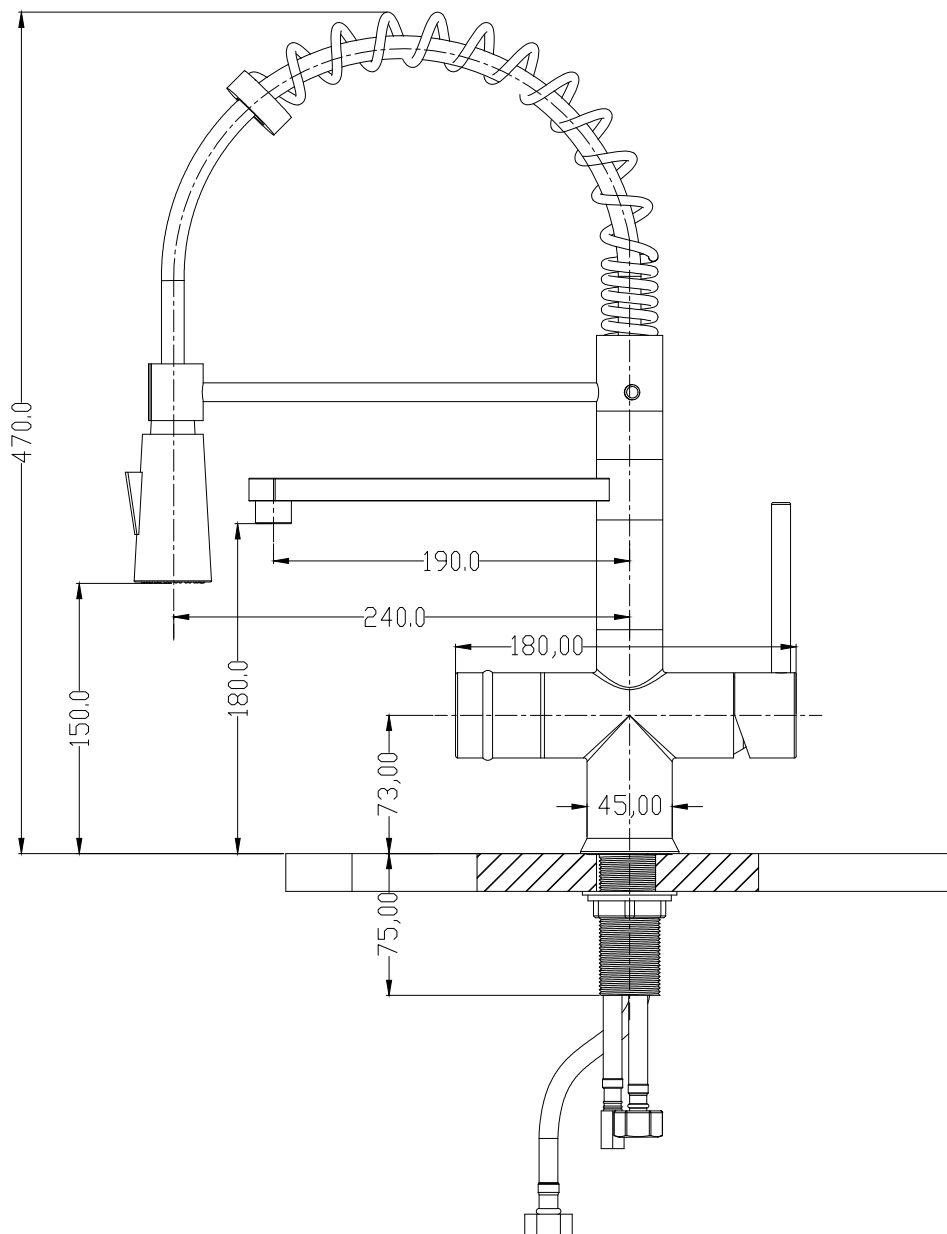
Accessories:

1. 2Pcs hot and cold hoses(Maybe not included)
2. 1pc quick connector filter water hose
3. 1pc rubber gasket ,
4. 1Pc locked set

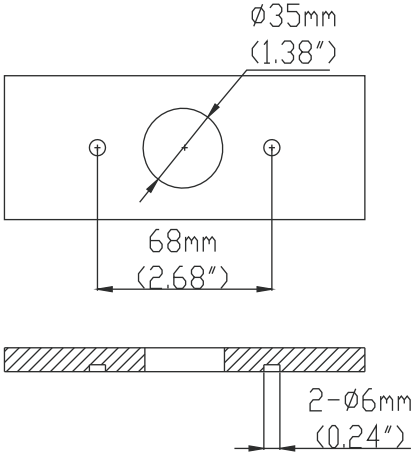
Replacement Parts



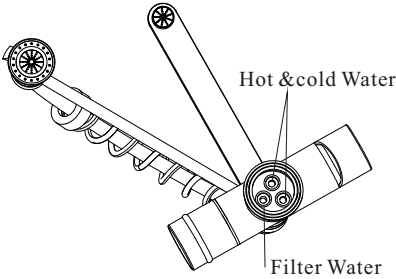
Profile Drawing



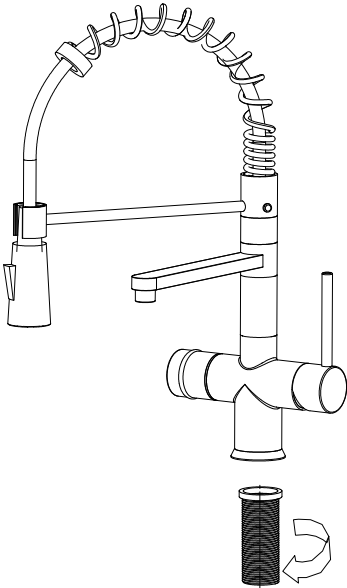
Faucet Installation Procedures



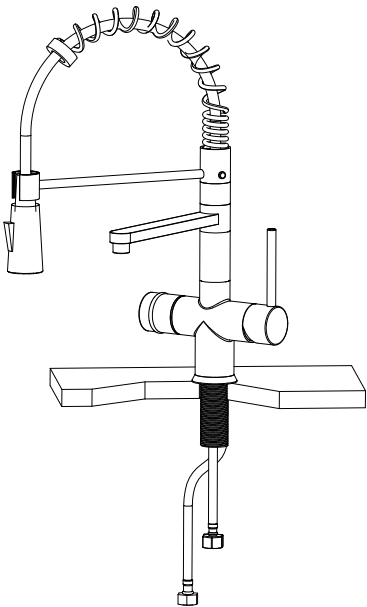
Step ① Please check Hot & cold Water and filter water channel first



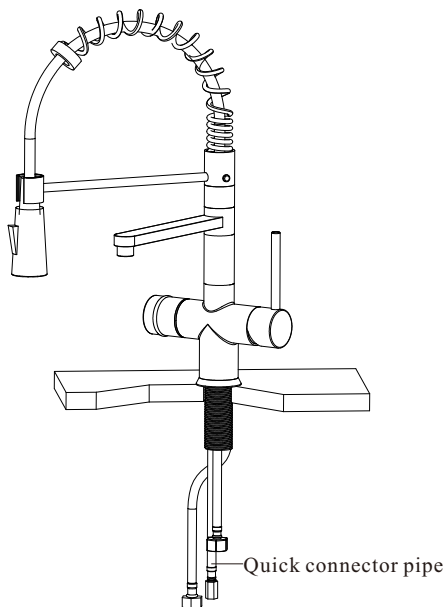
Step ② Fixed lock bolt



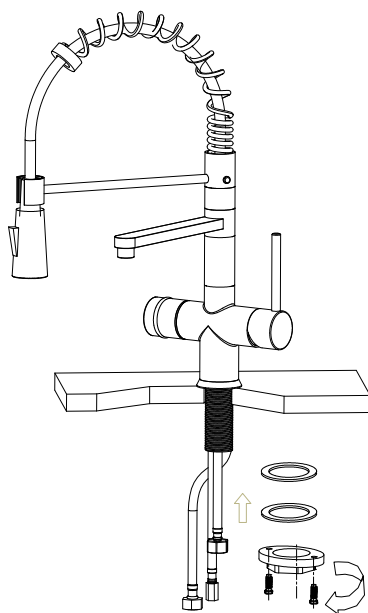
Step ③ Installing Cold&hot water hose



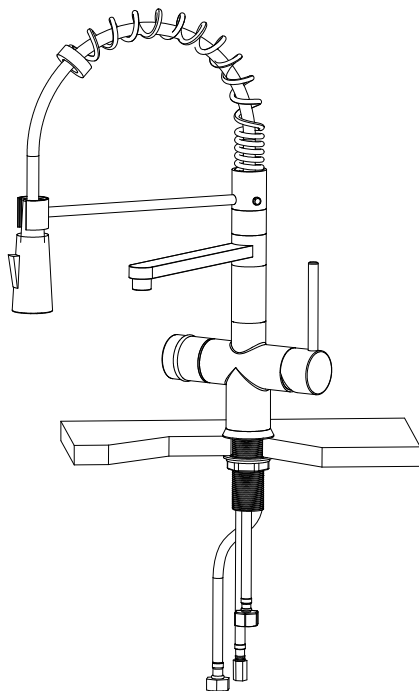
Step ④ Installing filter water quick connector pipe



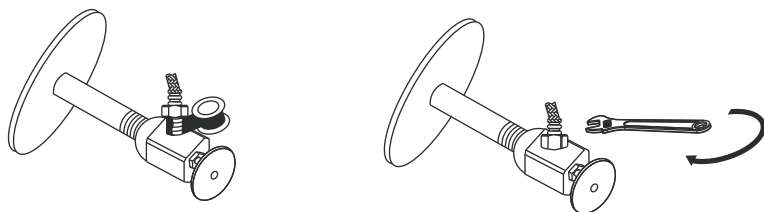
Step ⑤ Fastened faucet by lock nut



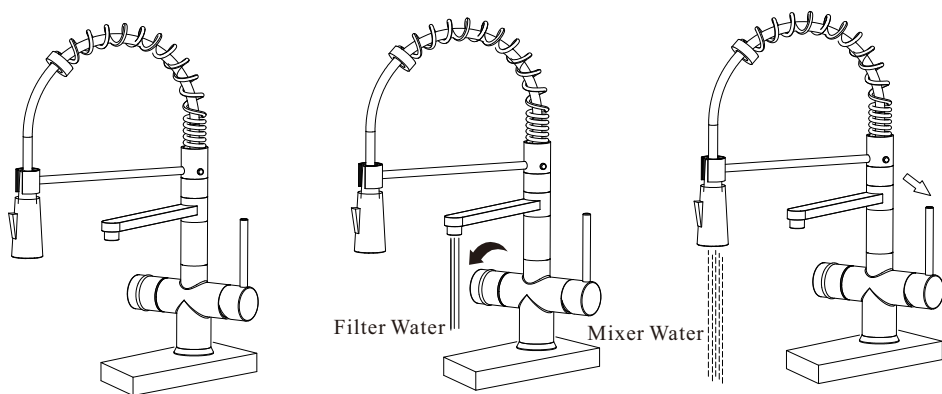
Step ⑥



Step ⑦



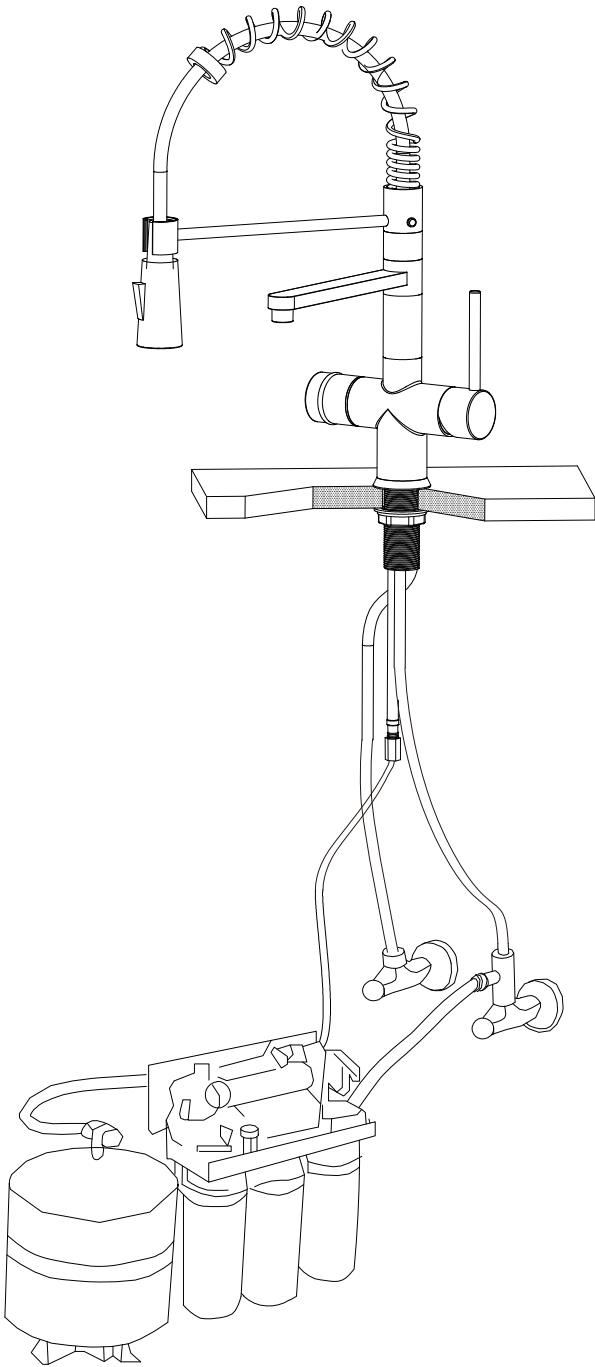
Step ⑧



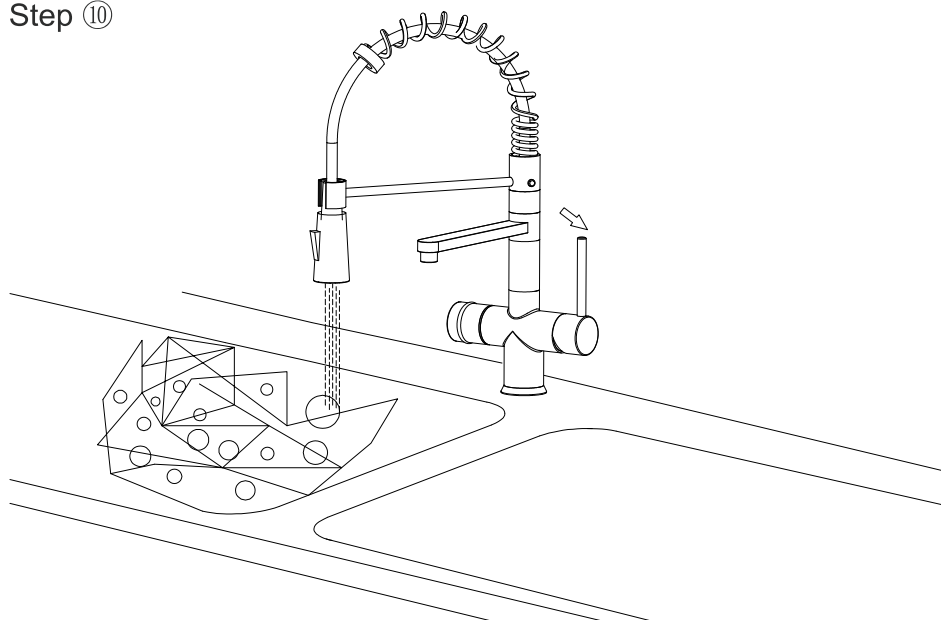
Notice

Please removal all the sand, silt etc. anything maybe block the cartridge before fixed to your kitchen Counter top. If the faucet cannot work, please send to a qualified person to repair it

Step ⑨



Step ⑩



Step ⑪

